



---

# ECE Collaboratory Meeting

---

December 15, 2021





# Overview

- Background on Home Grown & home-based child care
- Building Networks of Support for home-based child care
- Building Supply of home-based child care
- Including family child care in publicly funded pre-K



# Home Grown

- Home Grown is a national collaborative of funders dedicated to improving the quality of and access to home-based child care (HBCC)
  - Inclusive of Family Child Care (FCC) providers and Family, Friend, and Neighbor (FFN) caregivers
- Home Grown Members:
  - Bainum Family Foundation, Buffett Early Childhood Fund, Gary Community Investments, Heinz Endowments, Heising-Simons Foundation, Imaginable Futures, Klingenstein Philanthropies, MAEVA Social Capital, Merage Foundations, Overdeck Family Foundation, the David and Lucile Packard Foundation, and the Pritzker Children's Initiative, Ralph C. Wilson Foundation, Vanguard
- **FACT SHEET**



# HBCC Landscape

## Where are young children having their early childhood experiences?

- **7 million children 0-5** in home-based child care
  - Less than 1 million in licensed family child care
  - Most in paid and unpaid family, friend, and neighbor care
  - Over 97% women; 50% persons of color
- **30% of infants and toddlers** attend home-based child care as their primary care arrangement compared to just 12% in centers

## Who receives care in home-based child care?

Children from low-income families

Black and Latinx children

Infants and toddlers

Children in rural areas

Children with special needs

Children whose parents work nontraditional hours

Immigrants & dual language learners



# HBCC Landscape

## **Why do families select home-based child care?**

- Trusting relationships with providers
- Shared culture, values, language, and child-rearing practices
- Accessibility and neighborhood care
- Care offered to mixed age groups (siblings stay together, continuity of care)
- Accommodations for non-traditional work hours
- Cost-effective care

## **Drivers of demand during COVID:**

- Perception of safety
- Small groups with consistent caregiver
- Prior relationships with caregivers and other consumers
- Flexibility in an uncertain employment environment



# HBCC Landscape (Pre-COVID)

- **Declining supply of regulated FCC:** between 2006 and 2015, the number of home-based providers receiving subsidies through the Child Care and Development Block Grant declined by more than 60 percent.
- **Long hours with low compensation:** average annual income for a licensed provider is \$29,377 from public and private sources for an average of 56.5 hours of care a week (10 to 12 hours a day). Licensed providers earn an annual salary that is 50% less than center-based providers.
- Challenges with participation and accountability in **center-centric early childhood systems**
- **Access to health resources:** 15 - 21% do not have health insurance



# HBCC During COVID

- Health concerns for themselves and their families
- Concern for the families they serve (health and mental health)
- Financial hardship:
  - Closures/enrollment changes/parents' ability to pay
  - Increased costs to clean and meet COVID requirements
  - Limited access to public supports (PPP; etc)
- Lack of distinct, specific and timely information
- Feasibility and implementation of new protocols
- Food and housing insecurity
- Additional challenges for FFN caregivers: exclusion from federal individual supports and many EC system supports



---

# Building Comprehensive Networks

---





# Building Networks of Support

**Networks** as durable infrastructure. Local intermediaries that:

- Serve as a hub for policy, payment, information and support to HBCC
- Support HBCC providers with quality, business & sustainability, and connections to comprehensive service

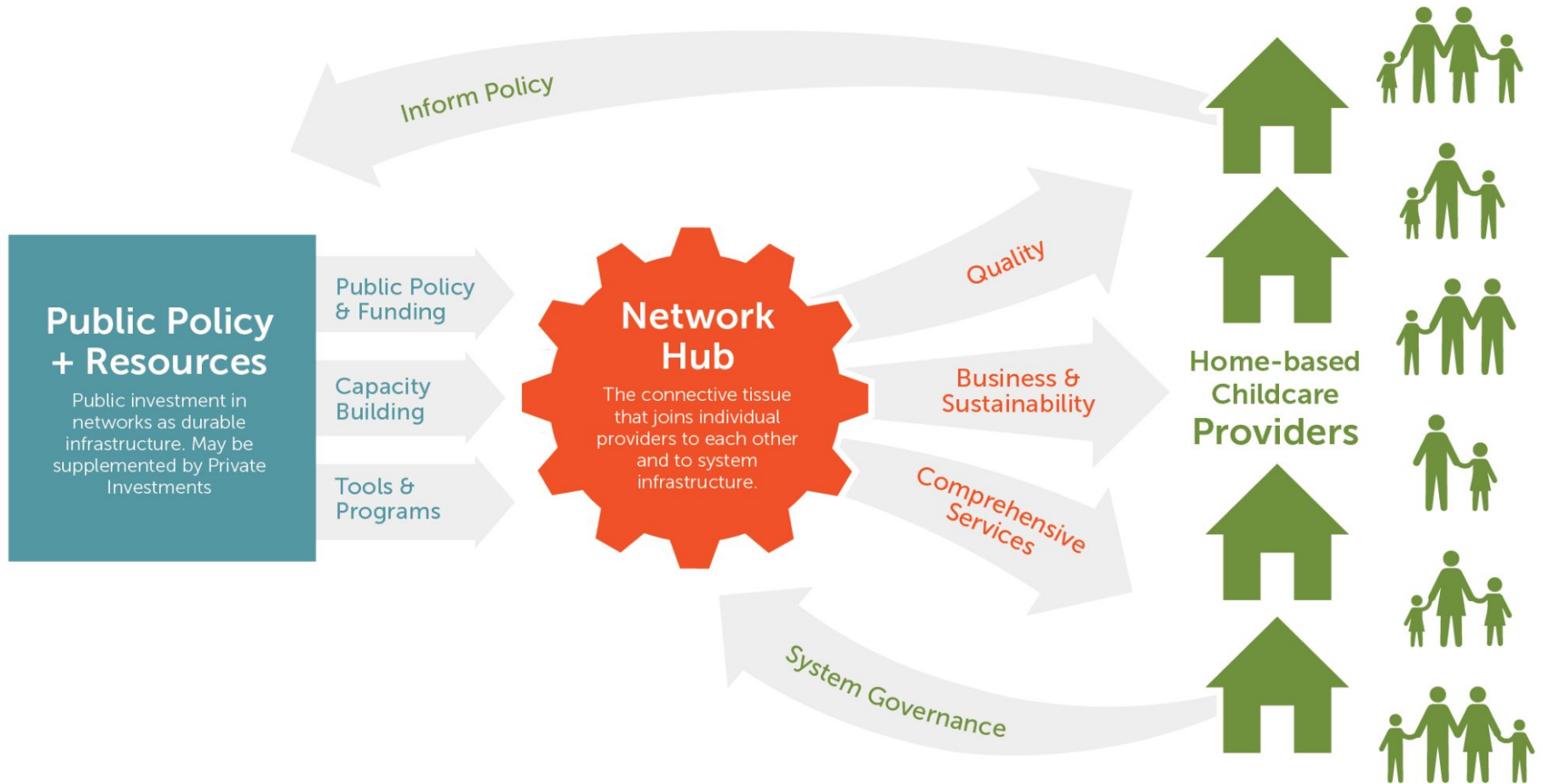
Support state and local gov't to build **effective networks** by:

- Developing organizational capacity
- Piloting & implementing effective tools & programs
- Reforming policy & accessing public financing

**Share learning and build evidence** of network effectiveness across all national TA efforts around home-based child care.

This is model and program agnostic. This is about how gov't supports HBCC.

# Role of a Comprehensive Network Hub





# Building Comprehensive Networks

Effective networks will enable providers to:

- Offer **high-quality** child development services;
- Be **financially sustainable** and offer continuous care (as individuals or small businesses);
- Connect children, families and providers to **comprehensive services** that improve their mental, physical, social and economic well being.
- Principles and practices of effective networks
  - Governance structure with distributed leadership (providers, parents, etc.)
  - Reflect the communities they serve (language, ethnicity, culture)
  - Prioritizes provider voice and needs
  - Transparent with decisions about resource allocation
  - Effective outreach and communication to/with providers
  - Support community connections (funders, policymakers, etc.)

# Building Comprehensive Networks webpage



[About Us](#) [Emergency Fund](#) [Response to COVID-19](#) ▾ [Leading From Home](#) [Resources](#) ▾ [Our Newsletter](#) [English](#)

## Resources for Building Comprehensive Networks

The COVID-19 pandemic illuminated the need for child care as infrastructure. As families juggled work, job loss, and distance learning, all while taking care of children, we've seen something grow in America: the reliance on, respect for, and recognition of home-based child care (HBCC). Yet HBCC remains woefully under-resourced.

Now as federal relief dollars begin to flow to the states and additional legislation is on the horizon, our country has the resources to build lasting infrastructure in the form of **comprehensive networks** to support HBCC providers and the families they serve.

# Building Comprehensive Networks webpage



## Resources:



**Brief: Home-Based Child  
Care Networks**



**Action Plan Template**



**Network Checklist for  
State and Local Admins**



**Compendium of  
Programs and Tools for  
Networks**



**Evaluation Toolkit  
(Coming Soon)**

# Compendium of Programs and Tools



About Show+Tell Ventures Funders Resources News



## Effective Support for Home-based Child Care:

A compendium of programs and tools for home-based child care networks

The compendium is here to help **networks** find & partner with exactly the **programs and tools** their provider members need.

[Search the Compendium](#)

Providers	Program Type	Provider Type Served	Priority Groups Served	Total Providers
All Our Kin	Quality support, Business & Sustainability	Licensed family child care providers (including the children and families served in this setting), Family, friend and neighbor caregivers (including the children and families served in this setting)	Non-English speakers, Dropouts or relative caregivers, Undocumented or mixed status caregivers, Rural caregivers	1,001-10,000
Cognitive Taylor	Quality Support, Quality support	Licensed family child care providers (including the children and families served in this setting), Family, friend and neighbor caregivers (including the children and families served in this setting)	Non-English speakers, Undocumented or mixed status caregivers, Rural caregivers	Better not set
Community Coaching	Quality support, Business & Sustainability	Licensed family child care providers (including the children and families served in this setting), Family, friend and neighbor caregivers (including the children and families served in this setting)	Non-English speakers, Rural caregivers	1-100
ECD Measures	Quality support	Licensed family child care providers (including the children and families served in this setting), Family, friend and neighbor caregivers (including the children and families served in this setting)	Non-English speakers, Rural caregivers	1-100
Early Learning	Business & Sustainability	Licensed family child care providers (including the children and families served in this setting)	Rural caregivers	101-1,000



---

# Building Supply

---



# Building Supply of Family Child Care

Recognize & support existing Family, Friend and Neighbor providers

- basic needs & benefits access
- safety & quality supports
- Subsidy to stabilize care

Offer pathways to licensure

- small business development
- professional
- enrollment

Increase capacity (small to large home)

- staffing support
- access to capital

Support programs: [All Our Kin](#), [Luna Latina Unidas](#), [Wonderschool](#), [NeighborSchools](#), [MyVillage](#)





---

# Including FCC in Pre-K

---



# Family Child Care in Pre-K

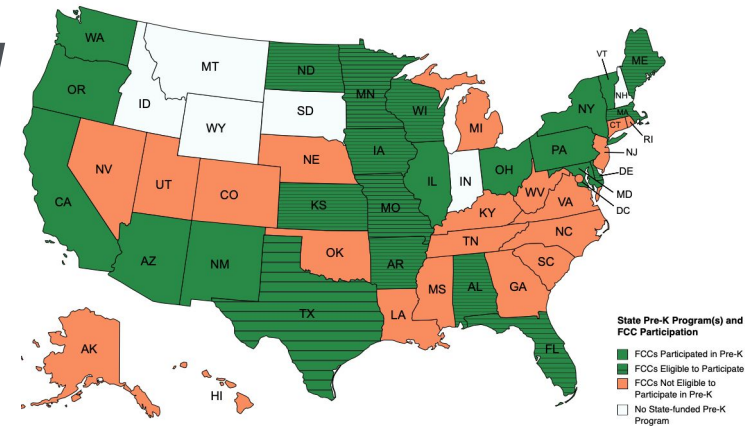
- Equity: we need to ensure that ECE systems include children, families and providers in the home-based setting
- Opportunity: with historic investments in pre-K, FCC programs can help ensure that we reach traditionally underserved communities, including Black and Brown, rural, and low-income families and those who work nontraditional or unpredictable schedules, groups that are more likely to use home-based care.
- Policy: BBB explicitly identifies networks of FCC as eligible to participate in universal pre-K.
- Learning: FCC/pre-K and FCC networks are happening around the country and there is much to learn from work in place as we consider how best to design or re-design more inclusive systems.
- NIEER: [Including Family Child Care in State and City-Funded Pre-K Systems](#)



# FCCs in State-funded Pre-K Systems

In 2019-2020, 44 states and D.C. operated 62 state funded pre-K programs:

- 29 of these programs in 24 states **allowed** FCC homes to receive state dollars to participate in pre-K
- Out of these 24 states:
  - 7 states did not have any FCC homes participating
  - 7 states were not able to report data/if any FCC homes participated
  - 10 states provided information about FCCs participation in pre-K





# Recommendations

- Bring regionally, culturally, ethnically, and linguistically diverse stakeholders together to discuss the inclusion of FCC
- Engage in strategic planning for gradual expansion, including evaluation and quality improvement supports
- Conduct cost and equity analysis: examine how inclusion of FCC supports traditionally underserved populations
- Establish equivalent but not necessarily identical program standards
- Investigate and pilot methods for developing a seamless Birth to Kindergarten system that builds on public pre-K while improving infant and toddler care.
- Explore the role of intermediaries to possibly reduce costs, improve accountability and oversight and increase quality (Networks)



---

# Thank you

v

Email: [natalie@homegrownchildcare.org](mailto:natalie@homegrownchildcare.org)

Newsletter:

<https://homegrownchildcare.org/newsletter/>

---